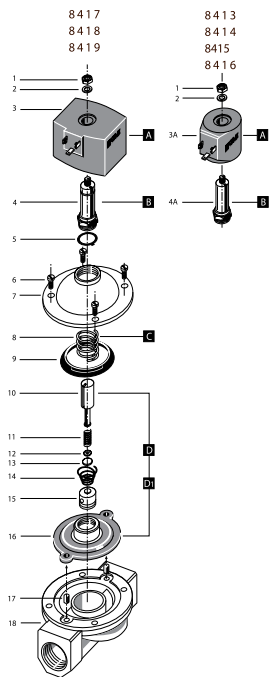
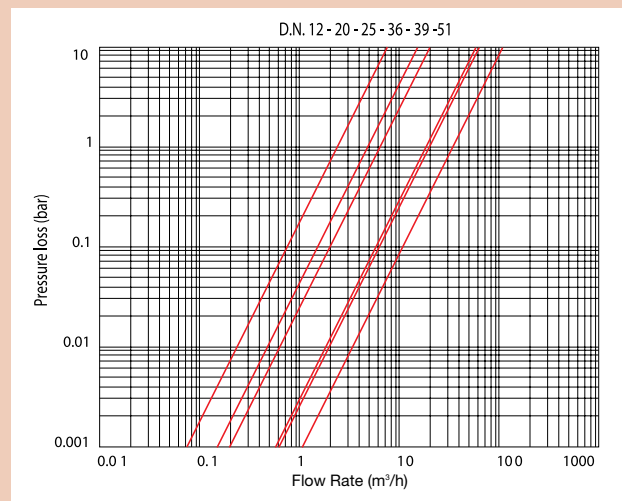


## Solenoid Valve Servo-Actuated 2/2 Way Normally Closed

### Features

- Medium - Water, Air, Oil
- Seal: NBR
- Body: Brass
- Zero min for low pressure applications (mount with coil in vertical position)

### Pressure / Flow Rate



N.	Part Name
1	Lock Nut
2	Washer
3	Coil
4	Tube Guide
5	O-ring
6	Screw
7	Valve Body Top
8	Spring
9	Ring
10	Plunger
11	Spring
12	Support
13	Seal
14	Spring
15	Bush
16	Diaphragm
17	Bush
18	Valve Body Base

### Coil Options

Voltage	50, 60 Hz	Power			
		3/8" - 1"		1 1/4" - 2"	
		Holding	in Rush	Holding	in Rush
V~ 12, 24, 48, 110, 230, 400		18va	47va	140va	430va
V= 12, 24, 48, 110		21w		43w	

DN	3/8"	1/2"	3/4"	1"	1 1/4"	1 1/2"	2"
A	61	61	100	100	146	146	174
B	105	105	110	116	200	200	216
C	48	48	80	80	128	128	146
D	92	92	93	96	170	170	180
Kgs	0.68	0.66	1.10	1.20	5.20	5.00	6.50

### Technical Data

Pressure Range 0 bar to 3/8" - 1/2" 5 Bar ac 5 Bar dc  
3/4" - 2" 4 Bar ac 2 Bar dc

Working Temperature -20°C to +90°C

Dimensions in mm

This data sheet is designed as a guide and should not be regarded as wholly accurate in every detail. We reserve the right to amend the specification of any product without notice.