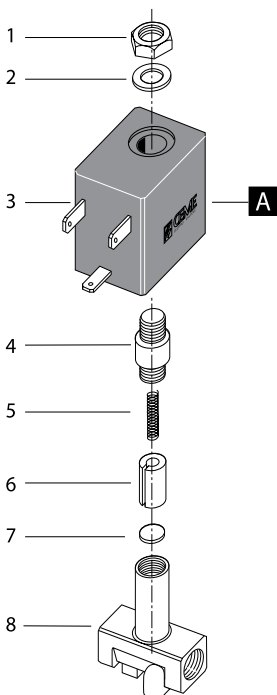
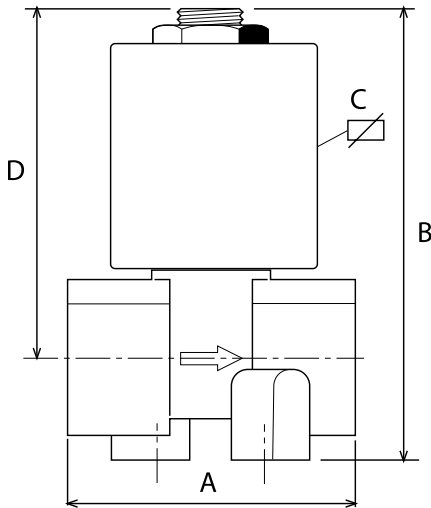


Solenoid Valve Direct Acting 2/2 Way Normally Closed

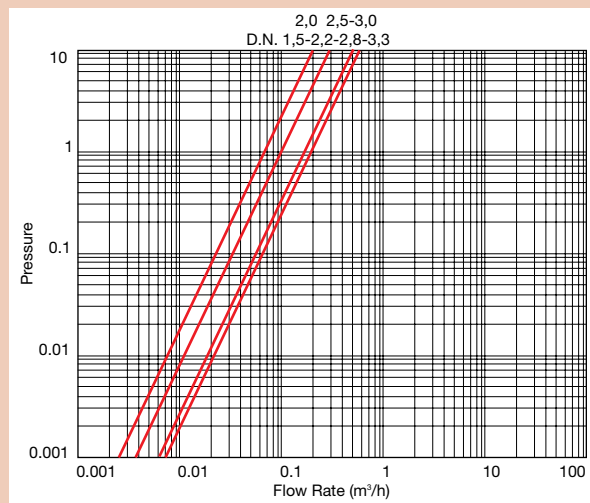
Features

- Media - Water, Air, Oil, Steam
- Seal: Viton
- Body: 1/8" - 1/4" BSP Brass
- 2mm Orifice (Other options available)



N.	Part Name
1	Lock Nut
2	Washer
3	Coil
4	Tube Stop
5	Spring
6	Plunger
7	Seal
8	Valve Body Base

Pressure / Flow Rate



Coil Options

Voltage	Power	
	Holding	in Rush
V~ 12, 24, 48, 110, 230, 400	50, 60 Hz	11va 15va
V= 12, 24, 48, 110		9w

DN	1/8" 2mm	1/4" 2mm
A	31	38
B	54	56
C	40	40
D	41	42
Kgs	0.10	0.12

Technical Data

Pressure Range	0 bar to 10 bar ac, 0 bar to 7 bar dc
Working Temperature	-10°C to +140°C